



KR-RM Series

Online UPS 1~3kVA

- » Low THDi: < 5%
- » High Ac/Ac Efficiency Up To 93.5%
- » High Output Power Factor Up To 1.0
- » Hot-Swappable and Extendable Battery Design

Green Power

- AC/AC efficiency up to 93.5%, less operation cost and more energy saving
- Output power factor up to 1.0, more powerful to connect more critical loads
- Input PF >0.996 and THDi<5%, less power pollution and lower TCO

Flexible Rear Panel Configuration

- Dry contact kits and SNMP are optional
- Selectable output sockets
- External battery pack port available
- Programmable power management outlet (optional)

User-friendly and Easy-shift LCD Display

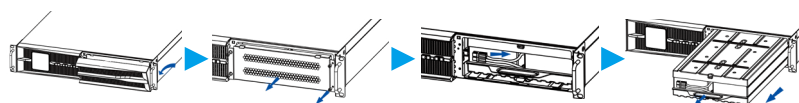
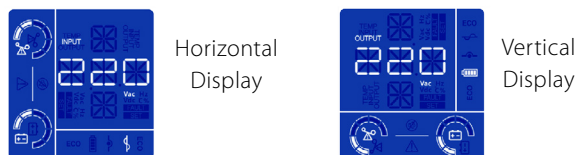
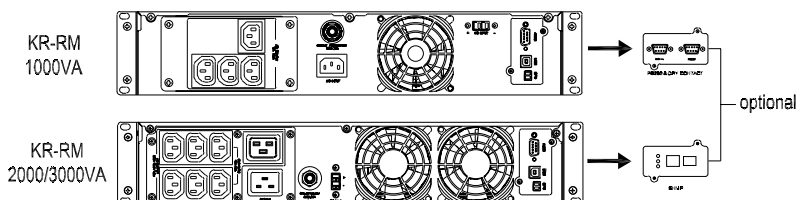
- The digital display can be easily shifted through LCD setting to suit for vertical/horizontal installation.

Hot-swappable Battery Design

- External battery pack is optional
- Easy for online battery replacement

Ecological Power Network

Typical Applications:



Technical Specification

MODEL	KR1000-RM	KR2000-RM	KR3000-RM
Input			
Voltage (Vac)	120-295		
Frequency (Hz)	50/60± 10% (50/60Hz auto-sensing)		
Power Factor	≥0.99		
THDi	<5%		
Output			
Capacity(VA)	1000	2000	3000
AC/AC Efficiency Max.	91.1%	92.5%	93.5%
Power Factor	0.9 (1.0 optional)		
Voltage (Vac)	208/220/230/240±1%(settable)		
Frequency(Hz)	50/60±0.1 (battery mode)		
THDv	THD <3% (linear load), THD < 5% (nonlinear load)		
Transfer Time	0		
ECO Mode	Yes		
Overload	101%~115% for 1 min, 116%~133% for 1 s, above 134% for 200ms		
Battery			
Voltage(Vdc)	36	48	72
BATT Type	3×7Ah/12V	4×9Ah/12V	6×9Ah/12V
Charging Current (A) Max.	1		
Other			
Communication Interface	RS232+USB+EPO (DB9 dry contact and SNMP adapter are optional)		
Output Outlet*	4×IEC320 C13	6×IEC320 C13 + 1×IEC320 C19	
Display	Blue screen LCD		
Alarm	Low battery, Abnormal AC input, UPS failure, etc.		
Protection	Low battery, overload, short-circuit and over temperature, etc.		
Noise (dB)	< 50	< 55	
Working Temperature	0~ 40°C		
Relative Humidity	0 ~ 95%, No condensation		
Dimension (WxDxH) mm	438×420×87	438×570×87	
Weight (kg)	13.2	19.9	24.8

* Specification is subject to change without prior notice

* IEC outlet is standard, other outlets are available and optional.

Xiamen Kehua Hengsheng Co., Ltd.

Add: No. 457, Malong Road, Torch High-Tech Industrial Zone, Xiamen Fujian China

Tel: +86-592-5160516 Fax: +86-592-5162166 www.kehua.com

